



The Global Language of Business

# Receiving Advice Business Message Standard (BMS)

*Release 3.5.1, Draft, Jan 2022*



## Document Summary

| Document Item    | Current Value                                    |
|------------------|--|
| Document Name    | Receiving Advice Business Message Standard (BMS) |
| Document Date    | Jan 2022   |
| Document Version | 3.5.1  |
| Document Issue   | 1  |
| Document Status  | Draft  |

## Work Request Reference

| Date of WR Submission to GSMP: | WR Submitter(s):                            | Refer to Work Request (WR) Number(s): |
|--------------------------------|---|---------------------------------------|
| 15-Oct-2009                    | GS1 Australia, GS1 Germany, GS1 Netherlands | 09-000240                             |
| 15-Oct-2009                    | GS1 Australia, GS1 Germany, GS1 Netherlands | 09-000239                             |
| 15-Oct-2009                    | GS1 Australia, GS1 Germany, GS1 Netherlands | 09-000238                             |
| 15-Oct-2009                    | GS1 Australia, GS1 Germany, GS1 Netherlands | 09-000236                             |
| 20- Aug-2008                   | GS1 Global Office                           | 08-000209                             |
| 29- Aug- 2007                  | Novozymes A/S                               | 07-000408                             |
| 05-Nov-2008                    | GS1 Global Office                           | 04-000211                             |
| 13-Dec-2013                    | GS1 Germany                                 | 13-000203                             |
| 07-Feb-2014                    | GS1 Germany                                 | 14-000021                             |
| 20-Mar-2014                    | GS1 Slovenia                                | 14-000044                             |
| 20-May-2013                    | GS1 Germany                                 | 14-000084                             |
| 25-Jun-2014                    | GS1 Global Office                           | 14-000110                             |
| 11-Sep-2015                    | GS1 US                                      | 15-000282                             |
| 28-Oct-2015                    | Philips N.V.                                | 15-000314                             |
| 08-Apr-2016                    | GS1 France                                  | 16-000245                             |
| 18-Jun-2017                    | GS1 France                                  | 17-000034                             |
| 18-Jun-2017                    | GS1 France                                  | 17-000042                             |
| 22-Jun-2018                    | GS1 France                                  | 18-000136                             |
| 03-Oct-2018                    | GS1 Global Office                           | 18-000319                             |

## Business Requirements Document (BRAD) Reference

| BRAD Title:   |           |
|---|-----------|
| BRAD Upstream Standards – Despatch, Receipt & Consumption | GS1, 2004 |
| BRD Receiving Advice – Business Requirement Document      | GS1, 2004 |
| BRAD for Current Requirements Queue (Major Release 3)     | GS1, 2010 |
| BRAD Warehousing Inbound & Outbound Processes             | GS1, 2012 |

## Document Change History

| Date of Change | Version             | Changed By      | Reason for Change | Summary of Change      |
|----------------|---------------------|-----------------|-------------------|------------------------|
| 12-Jan-2012    | BMS 3.0 – Issue 1   | Mark Van Eeghem | BMS Release 3.0   | See summary of changes |
| 01-May-2013    | BMS 3.1 – Issue 1   | Coen Janssen    | BMS Release 3.1   | See summary of changes |
| 15-Sep-2014    | BMS 3.2 – Issue 1   | Ewa Iwicka      | BMS Release 3.2   | See summary of changes |
| 01-Mar-2017    | BMS 3.3 – Issue 1   | Ewa Iwicka      | BMS Release 3.3   | See summary of changes |
| 15-Oct-2018    | BMS 3.4 – Issue 1   | Ewa Iwicka      | BMS Release 3.4   | See summary of changes |
| 02-Feb-2021    | BMS 3.5 – Issue 1   | Miklos Bolyky   | BMS Release 3.5   | See summary of changes |
| 05-Jan-2022    | BMS 3.5.1 – Issue 1 | Miklos Bolyky   | BMS Release 3.5.1 | See summary of changes |

## Disclaimer

GS1®, under its IP Policy, seeks to avoid uncertainty regarding intellectual property claims by requiring the participants in the Work Group that developed this **Receiving Advice Business Message Standard (BMS)** to agree to grant to GS1 members a royalty-free licence or a RAND licence to Necessary Claims, as that term is defined in the GS1 IP Policy. Furthermore, attention is drawn to the possibility that an implementation of one or more features of this Specification may be the subject of a patent or other intellectual property right that does not involve a Necessary Claim. Any such patent or other intellectual property right is not subject to the licencing obligations of GS1. Moreover, the agreement to grant licences provided under the GS1 IP Policy does not include IP rights and any claims of third parties who were not participants in the Work Group.

Accordingly, GS1 recommends that any organization developing an implementation designed to be in conformance with this Specification should determine whether there are any patents that may encompass a specific implementation that the organisation is developing in compliance with the Specification and whether a licence under a patent or other intellectual property right is needed. Such a determination of a need for licencing should be made in view of the details of the specific system designed by the organisation in consultation with their own patent counsel.

THIS DOCUMENT IS PROVIDED "AS IS" WITH NO WARRANTIES WHATSOEVER, INCLUDING ANY WARRANTY OF MERCHANTABILITY, NONINFRINGEMENT, FITNESS FOR PARTICULAR PURPOSE, OR ANY WARRANTY OTHERWISE ARISING OUT OF THIS SPECIFICATION. GS1 disclaims all liability for any damages arising from use or misuse of this Standard, whether special, indirect, consequential, or compensatory damages, and including liability for infringement of any intellectual property rights, relating to use of information in or reliance upon this document.

GS1 retains the right to make changes to this document at any time, without notice. GS1 makes no warranty for the use of this document and assumes no responsibility for any errors which may appear in the document, nor does it make a commitment to update the information contained herein.

GS1 and the GS1 logo are registered trademarks of GS1 AISBL.

# Table of Contents

|          |   |           |
|----------|---|-----------|
| <b>1</b> | <b>Business Domain View .....</b>                 | <b>5</b>  |
| 1.1      | Introduction .....                                | 5         |
| 1.2      | References .....                                  | 5         |
| <b>2</b> | <b>Business Context .....</b>                     | <b>6</b>  |
| <b>3</b> | <b>Business Transaction View .....</b>            | <b>6</b>  |
| 3.1      | Business Transaction - Receiving Advice .....     | 6         |
| 3.2      | Business Transaction - Receipt Notification ..... | 8         |
| <b>4</b> | <b>Business Information View .....</b>            | <b>10</b> |
| 4.1      | Receiving Advice .....                            | 10        |
| 4.2      | Receiving Advice Line Item .....                  | 14        |
| 4.3      | Receiving Advice Logistic Unit .....              | 18        |
| 4.4      | Receiving Advice Transport Information .....      | 19        |
| 4.5      | Enumerations (message specific) .....             | 21        |
| 4.6      | Code Lists .....                                  | 21        |
| <b>5</b> | <b>Business Message Examples .....</b>            | <b>22</b> |
| 5.1      | Example .....                                     | 22        |
| <b>6</b> | <b>Implementation Considerations .....</b>        | <b>24</b> |
| 6.1      | User Guide .....                                  | 24        |
| 6.2      | Message Specific Considerations .....             | 24        |
| <b>7</b> | <b>Summary of Changes .....</b>                   | <b>25</b> |
| 7.1      | BMS Release 3.0 .....                             | 25        |
| 7.2      | BMS Release 3.1 .....                             | 25        |
| 7.3      | BMS Release 3.2 .....                             | 26        |
| 7.4      | BMS Release 3.3 .....                             | 27        |
| 7.5      | BMS Release 3.4 .....                             | 29        |
| 7.6      | BMS Release 3.5 .....                             | 29        |
| 7.7      | BMS Release 3.5.1 .....                           | 29        |
| <b>8</b> | <b>Appendices .....</b>                           | <b>30</b> |
| <b>9</b> | <b>Acknowledgements .....</b>                     | <b>30</b> |
| 9.1      | Work Group .....                                  | 30        |
| 9.2      | Development Team Members .....                    | 31        |

# 1 Business Domain View

## 1.1 Introduction

### Message Definition

The Receiving Advice enables the receiver of the shipment to inform the shipper on the actual goods received, compared to what was advised as being sent.

### Principles

Typical business uses of the receipt information can include – updating of inventory, identifying shipping discrepancies, and adjusting orders and related invoicing.

The Receiving Advice can be used in correlation with the Despatch Advice or other shipment documents to:

- Provide a simple acknowledgment that goods have been received
- Provide a detailed verification of actual goods received
- Provide notification of exceptions between shipment documentation (e.g. Despatch Advice and BOL) and actual receipts

## 1.2 References

| Reference Name  | Description   |
|---|---|
| BMS eCom Domain Common Library Release 3.5.1  | The documented design of components that are used in multiple messages within the eCom Domain.  |
| BMS Shared Common Library Release 3.5.1   | The documented design of components that are used in multiple messages within both GDSN and the eCom Domain.  |
| BRAD Upstream Standards – Despatch, Receipt & Consumption 0.1.1                                 |   |
| BRAD Receiving Advice 2.1.1   |   |
| Business Requirements Analysis document (BRAD) for Current Requirements Queue (Major Release 3) | This BRAD is used to consolidate a list of requirements that have been submitted and approved by the eCom BRG as individual change requests. As such, each change request may have a different business justification as described by the original submitter. These change requests are listed in the " <a href="#">Change Request Reference</a> " section. |
| BRAD Warehousing Inbound and Outbound Processes. [BRAD-WIO]                                     |   |

## 2 Business Context

| Context Category     | Value(s)                              |
|----------------------|---------------------------------------|
| Industry             | All                                   |
| Geopolitical         | Global                                |
| Product              | All                                   |
| Process              | Deliver                               |
| Official Constraints | None                                  |
| Roles                | Shipper, Ship From, Receiver, Ship To |
| System Capabilities  | GS1 System, EANCOM, XML               |

## 3 Business Transaction View

### 3.1 Business Transaction - Receiving Advice

When the Receiver receives a shipment of goods from the Shipper, the Receiver compares the received goods to what was advised as despatched on the despatch advice or shipping documents, and creates and sends a Receiving Advice. The Receiver has the following options to choose from regarding what the Receiving Advice may contain:

- **Full** – details- Includes qualitative and/or quantitative details regarding everything received (all line items) whether or not there were exceptions between what was received and what was advised as being sent.
- **Exceptions** – Includes only qualitative and/or quantitative exceptions between what was received and what was advised as being sent.
- **Confirmation** – The acceptance of the receipt of goods.

#### Business Transaction Use Case Diagram

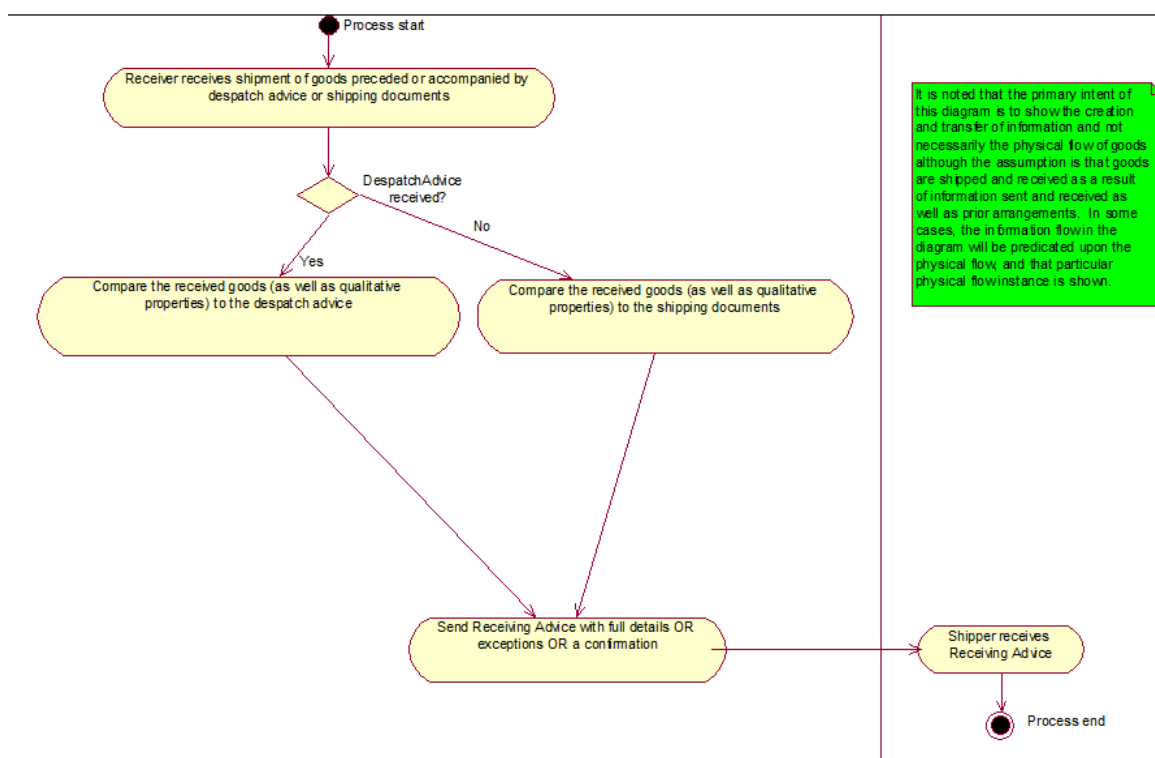
Not Applicable

#### Use Case Description

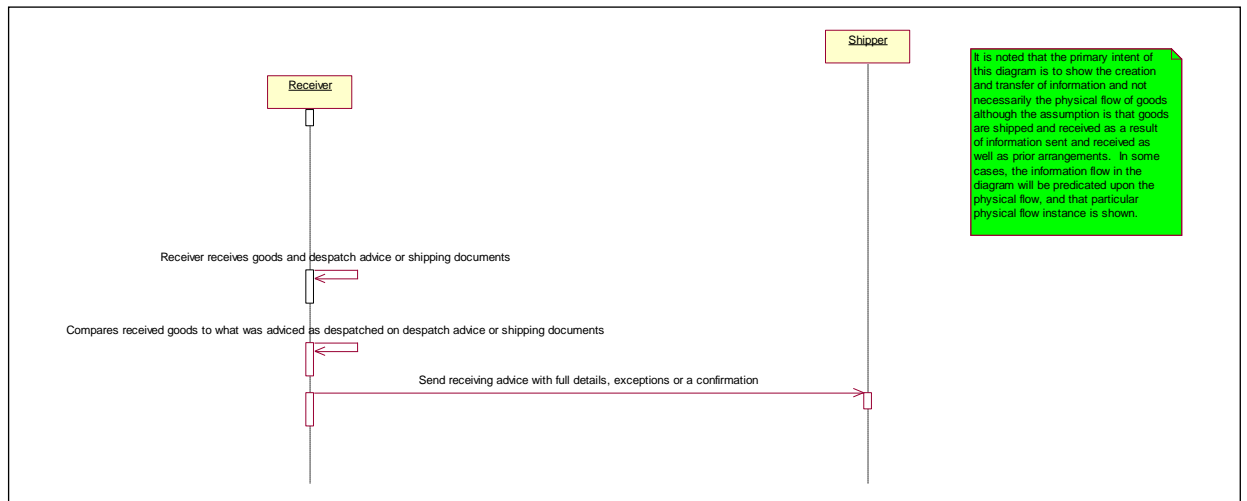
|                      |   |
|----------------------|---|
| Use Case ID          |   |
| Use Case Name        | Create and Send Receiving Advice  |
| Use Case Description | Describes a complete process whereby a Receiver generates a Receiving Advice based on information gained from received goods and physical or electronic documents from a Shipper. |
| Actors (Goal)        | Receiver and Shipper  |
| Performance Goals    | None  |
| Preconditions        | Master data alignment of locations (GLNs) and products (GTINs).   |
| Post conditions      | Indication of exceptions, full-detailed comparison or confirmation between goods received and goods advised as despatched.  |

|                            |   |  |   |
|----------------------------|---|--|---|
| Scenario                   | <b>Begins when:</b><br>The Receiver receives a shipment of goods accompanied or preceded by the Despatch Advice or Shipping Documents.  |  |   |
|                            | <b>Continues with:</b>  |  |   |
|                            | <b>Step #</b>   | <b>Actor</b>   | <b>Activity Step</b>                          |
|                            | 1.  | Receiver   | Sends Receiving Advice message to the Shipper |
|                            | 1.  | Shipper  | Receives Receiving Advice Message             |
|                            | <b>Ends when:</b><br>Receiver compares the received goods (as well as qualitative properties) to what was advised as being sent on the despatch advice or shipping documents. |  |   |
|                            | Alternative Scenario  |  |   |
| Business Transaction Rules | 1.  | Receiving Advice will include full details OR exceptions OR a confirmation of the received goods compared to what was advised as being despatched on the despatch advice or shipping documents |   |

### Business Transaction Activity Diagram(s)

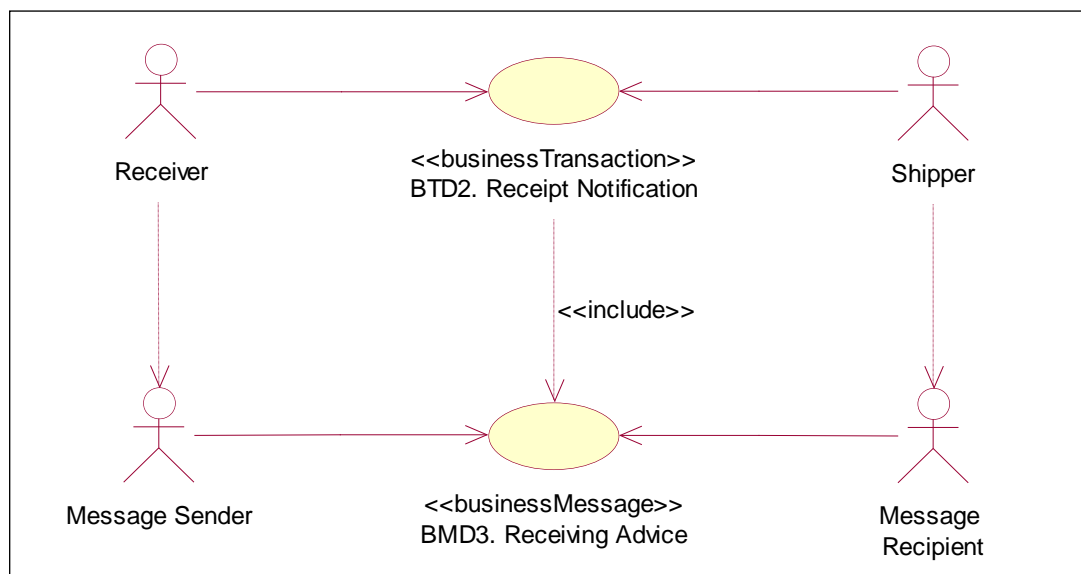


## Business Transaction Sequence Diagram(s)



## 3.2 Business Transaction - Receipt Notification

### Business Transaction Use Case Diagram





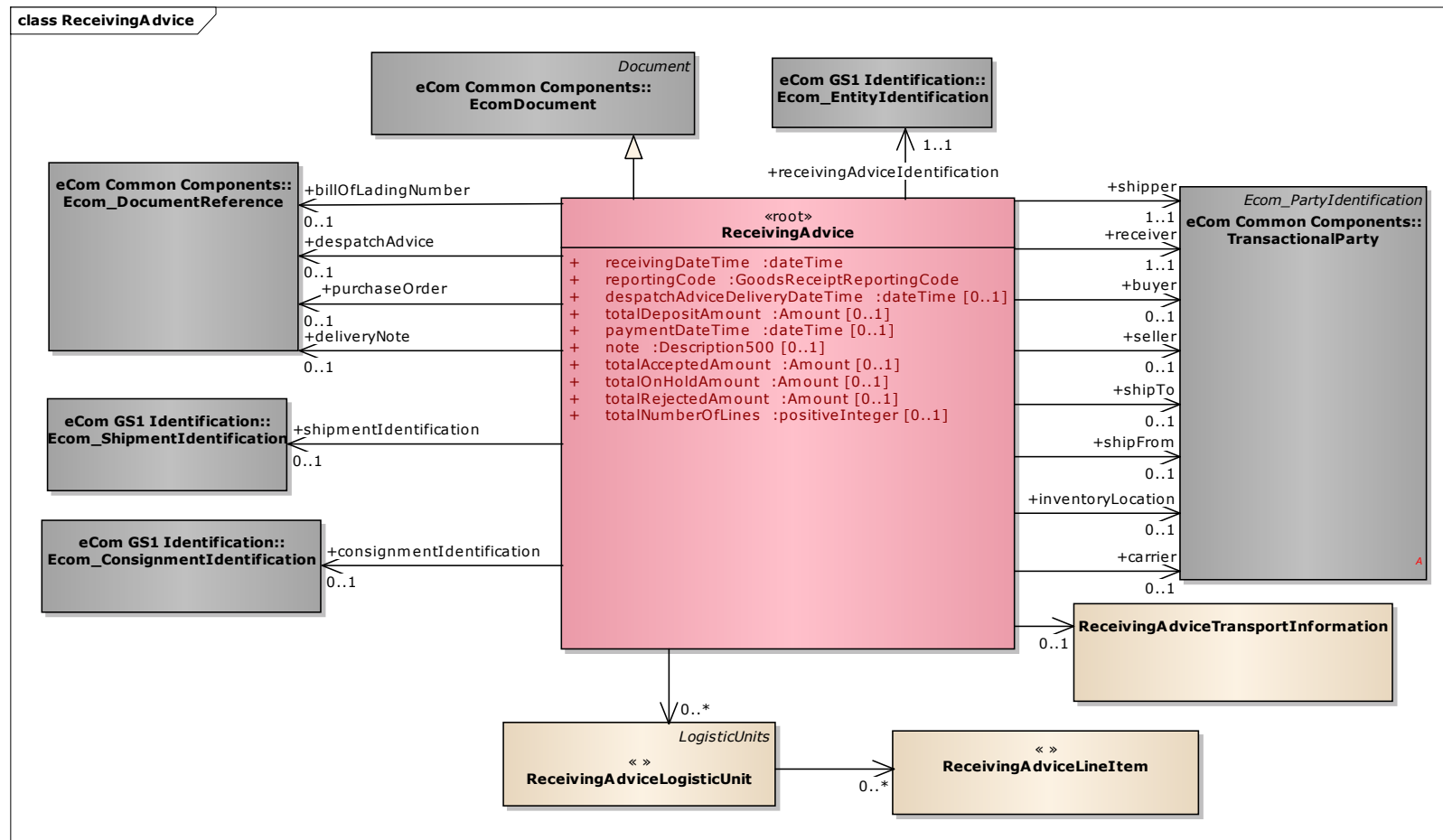
## Use Case Description

| Use Case ID                | BTD2   |  |       |               |    |          |  |    |         |                                |
|----------------------------|--|--|-------|---------------|----|----------|--|----|---------|--------------------------------|
| Use Case Name              | Receipt Notification   |  |       |               |    |          |  |    |         |                                |
| Use Case Description       | Describes the receipt notification process.  |  |       |               |    |          |  |    |         |                                |
| Actors (Goal)              | Receiver: To inform the Shipper about the contents of a received shipment.<br>Shipper: To be informed about the contents and conditions of the shipment at arrival at the destination.   |  |       |               |    |          |  |    |         |                                |
| Performance Goals          | The receipt notification must be sent shortly after the receipt of the shipment in order to avoid invoicing errors.  |  |       |               |    |          |  |    |         |                                |
| Preconditions              | GOODS: RECEIVED, COUNTED AND CHECKED<br>DISPATCH NOTIFICATION: RECEIVED (BY RECEIVER)  |  |       |               |    |          |  |    |         |                                |
| Post conditions            | RECEIPT NOTIFICATION: RECEIVED (BY SHIPPER)  |  |       |               |    |          |  |    |         |                                |
| Scenario                   | <div><div><b>Begins when:</b></div><div><b>Continues with:</b></div><table><thead><tr><th>Step #</th><th>Actor</th><th>Activity Step</th></tr></thead><tbody><tr><td>2.</td><td>Receiver</td><td>Sends Receiving Advice to the Ship From party.</td></tr><tr><td>3.</td><td>Shipper</td><td>Receives the Receiving Advice.</td></tr></tbody></table><div><b>Ends when:</b></div></div> | Step #   | Actor | Activity Step | 2. | Receiver | Sends Receiving Advice to the Ship From party. | 3. | Shipper | Receives the Receiving Advice. |
| Step #                     | Actor  | Activity Step                                  |       |               |    |          |  |    |         |                                |
| 2.                         | Receiver   | Sends Receiving Advice to the Ship From party. |       |               |    |          |  |    |         |                                |
| 3.                         | Shipper  | Receives the Receiving Advice.                 |       |               |    |          |  |    |         |                                |
| Alternative Scenario       | Not Applicable   |  |       |               |    |          |  |    |         |                                |
| Business Transaction Rules | Not Applicable   |  |       |               |    |          |  |    |         |                                |

## 4 Business Information View

### 4.1 Receiving Advice

#### Class diagram



**GDD report**

The content of the ReceivingAdvice class, its structure and component definitions can be accessed in the Global Data Dictionary:

[http://apps.gs1.org/GDD/bms/Version3\\_4/Pages/bieDetails.aspx?semanticURN=urn:gs1:gdd:bie:ReceivingAdvice](http://apps.gs1.org/GDD/bms/Version3_4/Pages/bieDetails.aspx?semanticURN=urn:gs1:gdd:bie:ReceivingAdvice)

| Content         | Attribute / Role  | Datatype / Secondaryclass           | Multiplicity | Definition  | Requirements |
|-----------------|-------------------|-------------------------------------|--------------|---|--------------|
| ReceivingAdvice |                   |                                     |              | The Receiving Advice enables the receiver of the shipment to inform the shipper on the actual goods received, compared to what was advised as being sent. |              |
| Association     |                   | ReceivingAdviceTransportInformation | 0..1         | Information with regards to the transportation and delivery of the shipment.  |              |
| Association     | deliveryNote      | Ecom_DocumentReference              | 0..1         | The delivery note accompanying the shipment.  | WR 15-000314 |
| Association     | despatchAdvice    | Ecom_DocumentReference              | 0..1         | Contains the reference to the despatch advice message to which the information in the receiving advice refers.  | WR 15-000314 |
| Association     | buyer             | TransactionalParty                  | 0..1         | Identifies the party to which products or services are sold.  |              |
| Generalization  |                   | EcomDocument                        |              | Basic information about the content of the message including version number, creation date and time and the placeholder for non-standard attributes.      |              |
| Association     | shipTo            | TransactionalParty                  | 0..1         | Identification of the location to where goods will be or have been shipped.   |              |
| Association     | carrier           | TransactionalParty                  | 0..1         | Uniquely identifies the entity that transports the shipment.  |              |
| Association     | shipper           | TransactionalParty                  | 1..1         | A party who engages in shipping goods. In a commercial scenario this would be the supplier.   |              |
| Association     |                   | ReceivingAdviceLogisticUnit         | 0..*         | Contains detailed information about the received logistic units.  |              |
| Association     | inventoryLocation | TransactionalParty                  | 0..1         | Identification of the location where the goods will be or have been stored.   |              |



## Receiving Advice Business Message Standard (BMS)

| Content     | Attribute / Role               | Datatype / Secondaryclass      | Multiplicity | Definition   | Requirements |
|-------------|--------------------------------|--------------------------------|--------------|--|--------------|
| Association | receiver                       | TransactionalParty             | 1..1         | A party who engages in receiving goods. In a commercial scenario this would be the customer.   |              |
| Association | shipFrom                       | TransactionalParty             | 0..1         | Identification of the location from where goods will be or have been shipped.  |              |
| Association | purchaseOrder                  | Ecom_DocumentReference         | 0..1         | Reference to the business document that triggered the delivery of the goods.;BRAD RQ 09.239  | WR 15-000314 |
| Association | consignmentIdentification      | Ecom_ConsignmentIdentification | 0..1         | Number that identifies the consignment. (In case consignment consists of one shipment, it coincides with the shipment number).The Consignment Number, AI (401), is allocated by a freight forwarder, (or a carriers acting as a freight forwarder), or a consignor, but only if the prior agreement of the freight forwarder is given. | WR 15-000314 |
| Association | shipmentIdentification         | Ecom_ShipmentIdentification    | 0..1         | Number that identifies the shipment.   | WR 15-000314 |
| Association | receivingAdviceIdentification  | Ecom_EntityIdentification      | 1..1         | Contains the unique identifier of the business document.   | WR 15-000314 |
| Association | billOfLadingNumber             | Ecom_DocumentReference         | 0..1         | Contains a reference to the bill of lading that accompanied the received goods.  | WR 15-000314 |
| Association | seller                         | TransactionalParty             | 0..1         | Identifies the party which sells products or services to a buyer.  |              |
| Attribute   | receivingDateTime              | dateTime                       | 1..1         | Contains the date and time the goods were actually received.   |              |
| Attribute   | reportingCode                  | GoodsReceiptReportingCode      | 1..1         | Contains the type of receipt notification that is being communicated: partial or full.   |              |
| Attribute   | despatchAdviceDeliveryDateTime | dateTime                       | 0..1         | Contains the planned delivery date time that was communicated in the despatch advice.  |              |

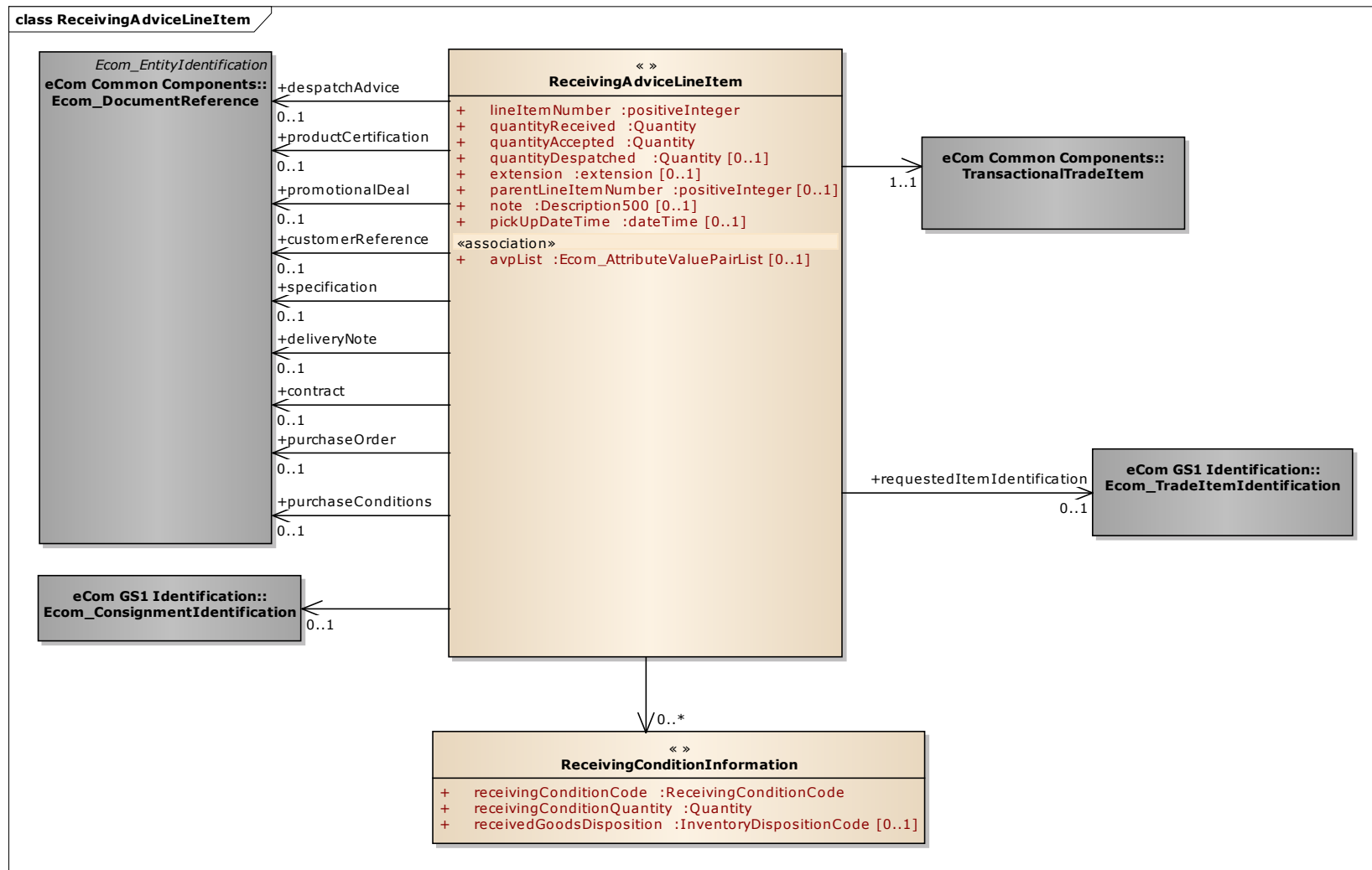
| Content   | Attribute / Role    | Datatype / Secondaryclass | Multiplicity | Definition  | Requirements                 |
|-----------|---------------------|---------------------------|--------------|---|------------------------------|
| Attribute | totalDepositAmount  | Amount                    | 0..1         | Used to control if the total amount of the deposit corresponds to the number of bank notes of given value. This attribute is used for cash handling purposes.                     | WR 16-000245                 |
| Attribute | totalAcceptedAmount | Amount                    | 0..1         | Specifies the amount has been accepted. This attribute can be used e.g. for cash or paper coupon handling purposes.   | WR 17-000042<br>WR 18-000136 |
| Attribute | paymentDateTime     | dateTime                  | 0..1         | The date on which the central bank has controlled the presumed false bank note that have been finally controlled as not false. This attribute is used for cash handling purposes. | WR 16-000250                 |
| Attribute | note                | Description500            | 0..1         | Free text used to convey information that is not processed by applications. Only meant to present the information to a user as on a screen, in a browser, etc.; BRAD RQ 09.236.F  |                              |
| Attribute | totalRejectedAmount | Amount                    | 0..1         | Specifies the amount has been rejected. This attribute can be used e.g. for paper coupon handling purposes.   | WR 17-000042                 |
| Attribute | totalOnHoldAmount   | Amount                    | 0..1         | Specifies the amount has been put on hold. This attribute can be used e.g. for paper coupon handling purposes.  | WR 17-000042                 |
| Attribute | totalNumberOfLines  | positiveInteger           | 0..1         | The number of all line items in the entire message  | WR 17-000034                 |



**Note:** Reference Shared Common Library Business Message (BMS) Release 3.5.1 and eCom Domain Common Library Business Message (BMS) Release 3.5.1 for all common information.

## 4.2 Receiving Advice Line Item

### Class Diagram



## GDD Report

The content of the ReceivingAdviceLineItem class, its structure and component definitions can be accessed in the Global Data Dictionary:

[http://apps.gs1.org/GDD/bms/Version3\\_4/Pages/bieDetails.aspx?semanticURN=urn:gs1:gdd:bie:ReceivingAdviceLineItem](http://apps.gs1.org/GDD/bms/Version3_4/Pages/bieDetails.aspx?semanticURN=urn:gs1:gdd:bie:ReceivingAdviceLineItem)

| Content                 | Attribute / Role     | Datatype / Secondary class | Multiplicity | Definition  | Requirements                              |
|-------------------------|----------------------|----------------------------|--------------|---|---|
| ReceivingAdviceLineItem |                      |                            |              | Contains detailed information about the received goods.   | MR3 renamed                               |
| Association             | despatchAdvice       | Ecom_DocumentReference     | 0..1         | Contains the reference to the despatch advice line to which the information in the receiving advice line item refers  | WR 15-000314                              |
| Association             |                      | ConsignmentIdentification  | 0..1         | Contains the identification of the consignment  |   |
| Association             |                      | TransactionalTradeItem     | 1..1         | Reference to the transactional trade item related to this line of the receiving advice.   |   |
| Association             | contract             | Ecom_DocumentReference     | 0..1         | Reference to the contractual agreement under which the goods are delivered.   | WR 15-000314                              |
| Association             | promotionalDeal      | Ecom_DocumentReference     | 0..1         | Reference to a number assigned by a vendor to a special promotion activity.   | WR 15-000314                              |
| Association             | specification        | Ecom_DocumentReference     | 0..1         | An essential technical requirement for items, materials or services, including the procedures to be used to determine whether the requirement has been met. Specifications may also include requirements for preservation, packaging, packing, and marking. | WR 15-000314                              |
| Association             | customerReference    | Ecom_DocumentReference     | 0..1         | Reference to the end customer that will receive the goods.  | MR3 renamed from customer<br>WR 15-000314 |
| Association             | purchaseConditions   | Ecom_DocumentReference     | 0..1         | Reference to the business document that describes the commercial conditions under which the goods are delivered.  | WR 15-000314                              |
| Association             | deliveryNote         | Ecom_DocumentReference     | 0..1         | Reference to the physical document that accompanies the delivered goods.  | WR 15-000314                              |
| Association             | productCertification | Ecom_DocumentReference     | 0..1         | Reference to a number assigned by a governing body (or their agents) to a product which certifies compliance with a standard.   | WR 15-000314                              |

| Content     | Attribute / Role            | Datatype / Secondary class    | Multiplicity | Definition   | Requirements   |
|-------------|-----------------------------|-------------------------------|--------------|--|--|
| Association | purchaseOrder               | Ecom_DocumentReference        | 0..1         | Reference to the business document that triggered the delivery of the goods.   | BRAD RQ 09.239<br>(was present in 2.5 already)<br>WR 15-000314 |
| Association |                             | ReceivingConditionInformation | 0..*         | Contains information about the state of the received goods, such as discrepancies, quality issues, surpluses, ....   |  |
| Association | requestedItemIdentification | Ecom_TradeItemIdentification  | 0..1         | Reference to the trade item identification for the requested trade item.   | WR 15-000314   |
| Attribute   | lineItemNumber              | positiveInteger               | 1..1         | Provides the line number associated to the Receiving Advice Line Item.   |  |
| Attribute   | quantityReceived            | Quantity                      | 1..1         | Number of units received.  |  |
| Attribute   | quantityAccepted            | Quantity                      | 1..1         | Number of units accepted.  |  |
| Attribute   | quantityDespatched          | Quantity                      | 0..1         | Number of units despatched.  |  |
| Attribute   | extension                   | extension                     | 0..1         | Extension point for inclusion of context specific information, such as information specific to a particular type of product. Example: Extension for meat products. |  |
| Attribute   | parentLineItemNumber        | positiveInteger               | 0..1         | The number of line item containing information about the parent of the current item. It allows establishing hierarchical link between the two items.               | WR 14-000021<br>WR 14-000044                                   |
| Attribute   | pickUpDateTime              | dateTime                      | 0..1         | Date/time at which the items are picked up.  | WR 18-000136   |
| Attribute   | note                        | Description500                | 0..1         | Free text used to convey information that is not processed by applications. Only meant to present the information to a user as on a screen, in a browser, etc.     | BRAD RQ 09.236.F   |
| Attribute   | avpList                     | Ecom_AttributeValuePairList   | 0..1         | Temporary attributes introduced between minor versions.  | WR 14-000110   |



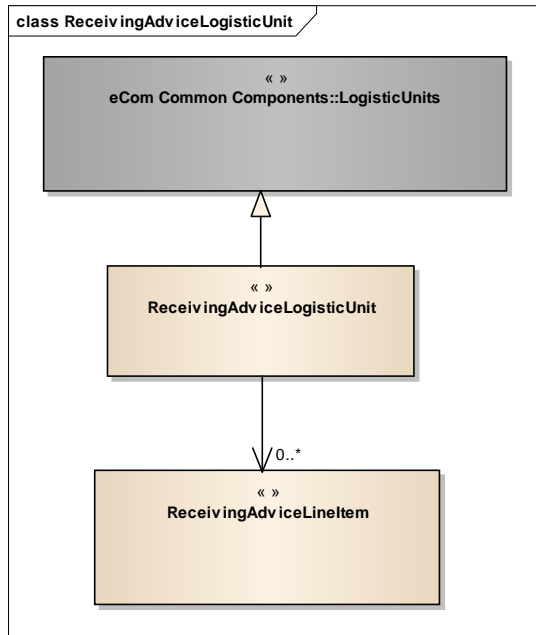
| Content                       | Attribute / Role           | Datatype /Secondary class | Multiplicity | Definition   | Requirements |
|-------------------------------|----------------------------|---------------------------|--------------|--|--------------|
| ReceivingConditionInformation |                            |                           |              | Contains information about the state of the received goods, such as discrepancies, quality issues, surpluses, .... |              |
| Attribute                     | receivingConditionCode     | ReceivingConditionCode    | 1..1         | Contains a code that specifies the condition of the received goods.  |              |
| Attribute                     | receivingConditionQuantity | Quantity                  | 1..1         | Specification of discrepancies between quantity accepted, quantity received, quantity despatched                   |              |
| Attribute                     | receivedGoodsDisposition   | InventoryDisposition Code | 0..1         | Provides information what needs to be done with goods of specific receivingCondition.                              | WR 15-000282 |



**Note:** Reference Shared Common Library Business Message (BMS) Release 3.5.1 and eCom Domain Common Library Business Message (BMS) Release 3.5.1 for all common information.

## 4.3 Receiving Advice Logistic Unit

### Class Diagram



### GDD Report

The content of the ReceivingAdviceLogisticUnit class, its structure and component definitions can be accessed in the Global Data Dictionary:

[http://apps.gs1.org/GDD/bms/Version3\\_4/Pages/bieDetails.aspx?semanticURN=urn:gs1:gdd:bie:ReceivingAdviceLogisticUnit](http://apps.gs1.org/GDD/bms/Version3_4/Pages/bieDetails.aspx?semanticURN=urn:gs1:gdd:bie:ReceivingAdviceLogisticUnit)

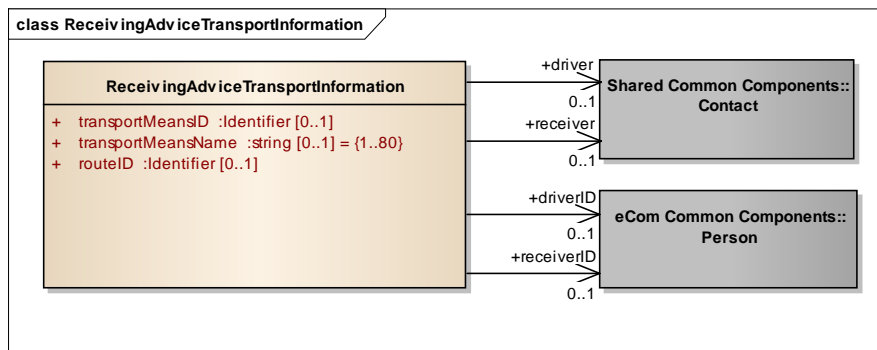
| Content                     | Attribute / Role | Datatype / Secondary class | Multiplicity | Definition   | Requirements |
|-----------------------------|------------------|----------------------------|--------------|--|--------------|
| ReceivingAdviceLogisticUnit |                  |                            |              | Contains detailed information about the received logistic units. | MR3 renamed  |
| Generalization              |                  | LogisticUnits              |              |  |              |
| Association                 |                  | ReceivingAdviceLineItem    | 0..*         | Contains detailed information about the received goods.          |              |



**Note:** Reference Shared Common Library Business Message (BMS) Release 3.5.1 and eCom Domain Common Library Business Message (BMS) Release 3.5.1 for all common information.

## 4.4 Receiving Advice Transport Information

### Class Diagram



### GDD Report

The content of the ReceivingAdviceTransportInformation class, its structure and component definitions can be accessed in the Global Data Dictionary:

[http://apps.gs1.org/GDD/bms/Version3\\_4/Pages/bieDetails.aspx?semanticURN=urn:gs1:gdd:bie:ReceivingAdviceTransportInformation](http://apps.gs1.org/GDD/bms/Version3_4/Pages/bieDetails.aspx?semanticURN=urn:gs1:gdd:bie:ReceivingAdviceTransportInformation)

| Content                             | Attribute / Role | Datatype /Secondary class | Multiplicity | Definition   | Requirements |
|-------------------------------------|------------------|---------------------------|--------------|--|--------------|
| ReceivingAdviceTransportInformation |                  |                           |              | Information with regards to the transportation and delivery of the shipment. | 13-000203    |
| Association                         | driverID         | Person                    | 0..1         | Identification information about the driver of the transported goods.        | 13-000203    |
| Association                         | receiver         | Contact                   | 0..1         | Contact information to the person receiving the goods.                       |              |
| Association                         | driver           | Contact                   | 0..1         | Contact information to the driver of the transported goods                   |              |
| Association                         | receiverID       | Person                    | 0..1         | Identification information about the person receiving the goods.             | 13-000203    |



| Content   | Attribute / Role   | Datatype /Secondary class | Multiplicity | Definition   | Requirements |
|-----------|--------------------|---------------------------|--------------|--|--------------|
| Attribute | transportMeansID   | Identifier                | 0..1         | Vehicle license plate/Aircraft number identifying a means of transport.                |              |
| Attribute | transportMeansName | string                    | 0..1         | The name, expressed as text, of a particular means of transport. E.g. The vessel name. |              |
| Attribute | routeID            | Identifier                | 0..1         | Unique identifier of the standard route that will be used for this transport movement. |              |

## 4.5 Enumerations (message specific)

Not applicable

## 4.6 Code Lists

| Class                         | Codelist                  | Referenced in   |
|-------------------------------|---------------------------|---|
| ReceivingAdvice               | GoodsReceiptReportingCode | <a href="http://apps.gs1.org/GDD/Pages/clDetails.aspx?semanticURN=urn:gs1:gdd:cl:GoodsReceiptReportingCode">http://apps.gs1.org/GDD/Pages/clDetails.aspx?semanticURN=urn:gs1:gdd:cl:GoodsReceiptReportingCode</a> |
| ReceivingConditionInformation | ReceivingConditionCode    | <a href="http://apps.gs1.org/GDD/Pages/clDetails.aspx?semanticURN=urn:gs1:gdd:cl:ReceivingConditionCode">http://apps.gs1.org/GDD/Pages/clDetails.aspx?semanticURN=urn:gs1:gdd:cl:ReceivingConditionCode</a>       |



**Note:** Refer to the Global Data Dictionary (GDD) for the code values.

## 5 Business Message Examples

### 5.1 Example

This is an example of a Receiving Advice message. The message is sent on April 13<sup>th</sup> 2011 at 11.45 AM, for goods received on April 11<sup>th</sup> at 11PM. The message is identification number is RA20051.

#### Party Information

| GS1 Global Location Number | Party Type |
|----------------------------|------------|
| 5412345000013              | Receiver   |
| 4098765000010              | Shipper    |
| 5412345000037              | Ship to    |

The Receiving Advice is sent by the Receiver (referred to as Buyer in Order, GLN 5412345000013) to the Shipper (referred to as Seller in Order, GLN 4098765000010).

The Receiver references the Despatch Advice # DA349875, sent on April 10<sup>th</sup> at 10:00 AM. The Receiver does not accept 10 items of the items identified with GTIN 40987650000223 – they have been damaged during transport. Items identified with GTIN 40987650000346 arrived in good condition and have been accepted.

#### Message Example

| Attribute  | Value            |
|--|------------------|
| <b>ReceivingAdvice</b>                                       |                  |
| <b>Document</b>  |                  |
| creationDateTime   | 2011-04-13 11:45 |
| documentStatusCode   | ORIGINAL         |
| <b>EntityIdentification (+receivingAdviceIdentification)</b> |                  |
| entityIdentification   | RA20051          |
| <b>PartyIdentification (+contentOwner)</b>                   |                  |
| gln  | 5412345000013    |
| receivingDateTime  | 2011-04-11 23:00 |
| reportingCode  | FULL_DETAILS     |
| <b>TransactionalPartyIdentification (+shipper)</b>           |                  |
| gln  | 4098765000010    |
| <b>TransactionalPartyIdentification (+receiver)</b>          |                  |
| gln  | 5412345000013    |
| <b>TransactionalPartyIdentification (+shipTo)</b>            |                  |
| gln  | 5412345000037    |
| <b>DocumentReference (+despatchAdvice)</b>                   |                  |
| <b>EntityIdentification</b>                                  |                  |
| entityIdentification   | DA349875         |
| <b>PartyIdentification (+contentOwner)</b>                   |                  |
| gln  | 4098765000010    |
| <b>ReceivingAdviceLogisticUnit *1</b>                        |                  |
| <b>LogisticUnits</b>   |                  |

| Attribute   | Value                        |
|---|------------------------------|
| packageTypeCode   | PE (pallet, modular)         |
| <b>LogisticUnitIdentification</b>                                 |                              |
| sscc  | 409876506700001010           |
| <b>ReceivingAdviceLineItem *1.1</b>                               |                              |
| lineItemNumber  | 1                            |
| quantityReceived  | 48                           |
| quantityAccepted  | 38                           |
| <b>TradeItemIdentification<br/>(+requestedItemIdentification)</b> |                              |
| gtin  | 40987650000223               |
| <b>DocumentReference<br/>(+despatchAdvice)</b>                    |                              |
| entityIdentification  | DA349875                     |
| lineItemNumber  | 1                            |
| <b>ReceivingConditionInformation</b>                              |                              |
| receivingConditionCode  | DAMAGED_PRODUCT_OR_CONTAINER |
| receivingConditionQuantity  | 10                           |
| <b>ReceivingConditionInformation</b>                              |                              |
| receivingConditionCode  | GOOD_CONDITION               |
| receivingConditionQuantity  | 38                           |
| <b>ReceivingAdviceLogisticUnit *2</b>                             |                              |
| <b>LogisticUnits</b>  |                              |
| packageType   | PE (pallet, modular)         |
| <b>LogisticUnitIdentification</b>                                 |                              |
| sscc  | 409876506700099994           |
| <b>ReceivingAdviceLineItem *2.1</b>                               |                              |
| lineItemNumber  | 2                            |
| quantityReceived  | 24                           |
| quantityAccepted  | 24                           |
| <b>TradeItemIdentification<br/>(+requestedItemIdentification)</b> |                              |
| gtin  | 40987650000346               |
| <b>DocumentReference<br/>(+despatchAdvice)</b>                    |                              |
| entityIdentification  | DA349875                     |
| lineItemNumber  | 2                            |
| <b>ReceivingConditionInformation</b>                              |                              |
| receivingConditionCode  | GOOD_CONDITION               |
| receivingConditionQuantity  | 24                           |

## **6 Implementation Considerations**

### **6.1 User Guide**

The Functional User Guide contains more information about the structure and content of the message: [http://www.gs1.org/docs/ecom/xml/3/3.4/eCom-Trade\\_messages.html#ReceivingAdvice](http://www.gs1.org/docs/ecom/xml/3/3.4/eCom-Trade_messages.html#ReceivingAdvice)

### **6.2 Message Specific Considerations**

Not Applicable



## 7 Summary of Changes

Any change in the GS1 standards is done based on the Work Request (WR) submitted by the GS1 User Companies or Member Organisations. All Work Requests are documented in the Work Request system available on the GS1 website: <http://wr.gs1.org>. The system is accessible to registered users. New visitors need to register first, to be able to access it. WRs can be searched by the number referenced in tables below, see: Search Work Requests. The number starts with the two last digits of the year when it was submitted, followed by the consecutive number within that year.



**Note:** WRs submitted earlier than February 2012 should be searched in Old Change Requests.

### 7.1 BMS Release 3.0

| Change  | Associated CR                        |
|---|--------------------------------------|
| Added architectural principles section to the document, updated the GDD reports, class diagrams and test data sections to reflect the changes required by the CRQ BRAD and MR3.0  | 09-236<br>09-238<br>09-239<br>09-240 |
| BMS Public Review:<br><ul style="list-style-type: none"> <li>removed association from ReceivingAdvice to ReceivingAdviceLineItem, in order to have only one path to the line item (via ReceivingAdviceLogisticUnit).</li> </ul>   |                                      |
| <b>BMS Publication:</b> <ul style="list-style-type: none"> <li>Updated date of document</li> <li>Clean-up of Document Change History</li> <li>Removed year from copyright statement in footer</li> <li>Attribute note in class ReceivingAdvice was missing def in GDD report. Fixed: "Free text used to convey information that is not processed by applications. Only meant to present the information to a user as on a screen, in a browser, etc." Was OK in GDD itself.</li> <li>Renamed uniqueCreatorIdentification into entityIdentification in examples</li> <li>Changed lowerCamelCase into lowercase for all GS1 keys in examples</li> </ul> |                                      |

### 7.2 BMS Release 3.1

| Change   | Associated CR    |
|--|------------------|
| <div> <div>class ReceivingAdvice - maintenance view</div> <div> <div>ReceivingAdvice</div> <div> + receivingDateTime: dateTime<br/> + reportingCode: GoodsReceiptReportingCode<br/> + despatchAdviceDeliveryDateTime: dateTime [0..1]<br/> + note: Description500 [0..1] </div> <div> <b>maintenance</b><br/> Change: (Verified) 3.1 added +buyer (BRAD WIO-RA-1)<br/> Change: (Verified) 3.1 added +seller (BRAD WIO-RA-2) </div> </div> </div> | BRAD WIO-RA-1, 2 |
| corrected the SSCC number in the example.  |                  |

## 7.3 BMS Release 3.2

| Change   | Associated<br>WR   |
|--|--|
| <ul style="list-style-type: none"> <li>Added identification of (WR 13-203): <ul style="list-style-type: none"> <li>Route</li> <li>transportMeansName</li> <li>Receiver – Contact</li> <li>Driver – Contact</li> </ul> </li> <li>Identify the Delivery note on header Level and the Package Quantity (WR 14-084)</li> <li>Added Attribute Value Pair at the root, line item and sub line item levels (WR 14-110)</li> </ul> <div> <p><b>class ReceivingAdvice - maintenance view</b></p> <pre> classDiagram     class ReceivingAdvice {         &lt;&lt;root&gt;&gt;         +receivingDateTime :dateTime         +reportingCode :GoodsReceiptReportingCode         +despatchAdviceDeliveryDateTime :dateTime [0..1]         +note :Description500 [0..1]     }     </pre> <p><i>maintenance</i></p> <p>Change: (Complete) 3.1 added +buyer (BRAD WIO-RA-1)<br/> Change: (Complete) 3.1 added +seller (BRAD WIO-RA-2)<br/> Change: (Verified) 3.2 added association to DocumentReference named deliveryNote (WR 14-084)<br/> Change: (Verified) 3.2 added association to ReceivingAdviceTransportInformation (WR 13-203)<br/> Change: (Verified) 3.2 changed generalisation from Document to eComDocument class to include AVP (WR 14-110)</p> </div> | <b>13-000203</b><br><b>14-000084</b><br><b>14-000110</b> |
| <ul style="list-style-type: none"> <li>Added a reference to parent line number to all LineItem classes, to support hierarchical items (WRs 14-021 &amp; 14-044)</li> <li>Added Attribute Value Pair at the root, line item and sub line item levels (WR 14-110)</li> </ul> <div> <p><b>class ReceivingAdviceLineItem - maintenance view</b></p> <pre> classDiagram     class ReceivingAdviceLineItem {         &lt;&lt;&gt;&gt;         +lineItemNumber :positiveInteger         +quantityReceived :Quantity         +quantityAccepted :Quantity         +quantityDespatched :Quantity [0..1]         +extension :extension [0..1]         +parentLineItemNumber :positiveInteger [0..1]         +note :Description500 [0..1]         +«association» avpList :Ecom_AttributeValuePairList [0..1]     }     </pre> <p><i>maintenance</i></p> <p>Change: (Verified) 3.2 added +avpList (WR 14-110)<br/> Change: (Verified) 3.2 added +parentLineItemNumber (WR 14-021 &amp; 14-044)</p> </div>   | <b>14-000021</b><br><b>14-000044</b><br><b>14-000110</b> |

| Change   | Associated WR    |
|--|------------------|
| <ul style="list-style-type: none"> <li>Added identification of (WR 13-203): <ul style="list-style-type: none"> <li>Route</li> <li>transportMeansName</li> <li>Receiver – Contact</li> <li>Driver – Contact</li> </ul> </li> </ul> <div> <b>class ReceivingAdviceTransportInformation - maintena...</b> <div> <b>ReceivingAdviceTransportInformation</b> <ul style="list-style-type: none"> <li>+ transportMeansID: Identifier [0..1]</li> <li>+ transportMeansName: string [0..1] = {1..80}</li> <li>+ routeID: Identifier [0..1]</li> </ul> <p><i>maintenance</i></p> <p>Change: (Verified) 3.2 new class (WR 13-203)</p> </div> </div> | <b>13-000203</b> |

## 7.4 BMS Release 3.3

| Change  | Associated WR  |
|---|--|
| <ul style="list-style-type: none"> <li>Created Ecom_EntityIdentification class and changed association from the previous EntityIdentification</li> <li>Created Ecom_DocumentReference class and changed association from the previous DocumentReference</li> <li>Created Ecom_ConsignmentIdentification class and changed association from the previous ConsignmentIdentification</li> <li>Created Ecom_ShipmentIdentification class and changed association from the previous ShipmentIdentification</li> </ul> <div> <b>class ReceivingAdvice - maintenance view</b> </div> | <b>15-000314</b><br>Make GS1 identification keys optional in GS1 EDI XML |

| Change  | Associated WR   |
|---|---|
| <p>Added +totalDepositAmount in ReceivingAdvice class</p> <p>Added +paymentDateTime in ReceivingAdvice class</p> <p><b>class ReceivingAdvice - maintenance view</b></p> <pre> «root» ReceivingAdvice + receivingDateTime :dateTime + reportingCode :GoodsReceiptReportingCode + despatchAdviceDeliveryDateTime :dateTime [0..1] + totalDepositAmount :Amount [0..1] + paymentDateTime :dateTime [0..1] + note :Description500 [0..1]  maintenance Change: (Complete) 3.1 added +buyer (BRAD WIO-RA-1) Change: (Complete) 3.1 added +seller (BRAD WIO-RA-2) Change: (Complete) 3.2 added association to DocumentReference named deliveryNote (WR 14-084) Change: (Complete) 3.2 added association to ReceivingAdviceTransportInformation (WR 13-203) Change: (Complete) 3.2 changed generalisation from Document to eComDocument class to include AVP (WR 14-110) Change: (New) 3.3 added +paymentDateTime (WR 16-250) Change: (New) 3.3 added +totalDepositAmount (WR 16-245) Change: (New) 3.3 added role name consignmentIdentification to Ecom_consignmentIdentification for backward compatibility Change: (New) 3.3 added role name shipmentIdentification to Ecom_ShipmentIdentification for backward compatibility Change: (New) 3.3 changed association from ConsignmentIdentification to Ecom_ConsignmentIdentification (WR 15-314) Change: (New) 3.3 changed association from EntityIdentification to Ecom_EntityIdentification (WR 15-314) Change: (New) 3.3 changed association from ShipmentIdentification to Ecom_ShipmentIdentification (WR 15-314) Change: (New) 3.3 changed associations from DocumentReference to Ecom_DocumentReference (WR 15-314) </pre> | <p><b>16-000245</b></p> <p>Add total amount of deposit at Receiving Advice level</p> <p><b>16-000250</b></p> <p>Add payment date time at Receiving Advice level</p> |
| <p>Added receivedGoodsDisposition to ReceivingConditionInformation Class associated to ReceivingAdviceLineItem</p> <p><b>class ReceivingAdviceLineItem - maintenance view</b></p> <pre> « » ReceivingConditionInformation + receivingConditionCode :ReceivingConditionCode + receivingConditionQuantity :Quantity + receivedGoodsDisposition :InventoryDispositionCode [0..1]  maintenance Change: (New) 3.3 added +receivedGoodsDisposition (WR 15-282) </pre>   | <p><b>15-000282</b></p> <p>Add received goods disposition to Receiving Advice Line Item</p>   |

## 7.5 BMS Release 3.4

| Change   | Associated WR  |
|--|--|
| <ul style="list-style-type: none"><li>■ Added an optional element: <b>totalNumberOfLines</b> to the <b>ReceivingAdvice</b> class</li><li>■ Added an optional elements: <b>totalAcceptedAmount</b>, <b>totalRejectedAmount</b> and <b>totalOnHoldAmount</b> to the <b>ReceivingAdvice</b> class</li><li>■ Added <b>totalAcceptedAmount</b> to the <b>ReceivingAdvice</b> class</li></ul>  | <p><b>17-000034</b></p> <p>Add number of lines to the receivingAdvice</p> <p><b>17-000042</b></p> <p>Add total amount accepted, total amount rejected, total amount on hold to the receivingAdvice</p> <p><b>18-000136</b></p> <p>Add Total deposit Accepted amount to the receivingAdvice</p> |
| <div><div>class ReceivingAdvice - maintenance view</div><div><div>«root»<br/>ReceivingAdvice</div><div><div>+ despatchAdviceDeliveryDateTime :dateTime [0..1]</div><div>+ note :Description500 [0..1]</div><div>+ paymentDateTime :dateTime [0..1]</div><div>+ receivingDateTime :dateTime</div><div>+ reportingCode :GoodsReceiptReportingCode</div><div>+ totalDepositAmount :Amount [0..1]</div><div>+ totalAcceptedAmount :Amount [0..1]</div><div>+ totalRejectedAmount :Amount [0..1]</div><div>+ totalOnHoldAmount :Amount [0..1]</div><div>+ totalNumberOfLines :positiveInteger [0..1]</div></div></div><div><div>maintenance</div><div><div>Change: (Complete) 3.1 added +buyer (BRAD WIO-RA-1)</div><div>Change: (Complete) 3.1 added +seller (BRAD WIO-RA-2)</div><div>Change: (Complete) 3.2 added association to DocumentReference named deliveryNote (WR 14-084)</div><div>Change: (Complete) 3.2 added association to ReceivingAdviceTransportInformation (WR 13-203)</div><div>Change: (Complete) 3.2 changed generalisation from Document to eComDocument class to include AVP (WR 14-110)</div><div>Change: (Complete) 3.3 added +paymentDateTime (WR 16-250)</div><div>Change: (Complete) 3.3 added +totalDepositAmount (WR 16-245)</div><div>Change: (Complete) 3.3 added role name consignmentIdentification to Ecom_consignmentIdentification for backward compatibility</div><div>Change: (Complete) 3.3 added role name shipmentIdentification to Ecom_shipmentIdentification for backward compatibility</div><div>Change: (Complete) 3.3 changed association from ConsignmentIdentification to Ecom_ConsignmentIdentification (WR 15-314)</div><div>Change: (Complete) 3.3 changed association from EntityIdentification to Ecom_EntityIdentification (WR 15-314)</div><div>Change: (Complete) 3.3 changed association from ShipmentIdentification to Ecom_ShipmentIdentification (WR 15-314)</div><div>Change: (Complete) 3.3 changed associations from DocumentReference to Ecom_DocumentReference (WR 15-314)</div><div>Change: (New) 3.4 added +totalAcceptedAmount (WR 17-042 &amp; 18-136)</div><div>Change: (New) 3.4 added +totalNumberOfLines (WR 17-034)</div><div>Change: (New) 3.4 added +totalOnHoldAmount (WR 17-042)</div><div>Change: (New) 3.4 added +totalRejectedAmount (WR 17-042)</div></div></div></div> |  |
| <p>Added an optional element: <b>pickUpDateTime</b> to the <b>ReceivingAdviceLineItem</b> class</p>  | <p><b>18-000136</b></p> <p>Add pickUpDateTime to the receivingAdviceLineItem</p>   |
| <div><div>class ReceivingAdviceLineItem - maintenance view</div><div><div>« »<br/>ReceivingAdviceLineItem</div><div><div>+ lineItemNumber :positiveInteger</div><div>+ quantityReceived :Quantity</div><div>+ quantityAccepted :Quantity</div><div>+ quantityDespatched :Quantity [0..1]</div><div>+ extension :extension [0..1]</div><div>+ parentLineItemNumber :positiveInteger [0..1]</div><div>+ note :Description500 [0..1]</div><div>+ pickUpDateTime :dateTime [0..1]</div></div><div><div>«association»</div><div>+ avpList :Ecom_AttributeValuePairList [0..1]</div></div><div><div>maintenance</div><div><div>Change: (Complete) 3.2 added +avpList (WR 14-110)</div><div>Change: (Complete) 3.2 added +parentLineItemNumber (WR 14-021 &amp; 14-044)</div><div>Change: (Complete) 3.3 changed association from ConsignmentIdentification to Ecom_ConsignmentIdentification (WR 15-314)</div><div>Change: (Complete) 3.3 changed association from TradeItemIdentification to Ecom_TradeItemIdentification (WR 15-314)</div><div>Change: (Complete) 3.3 changed associations from DocumentReference to Ecom_DocumentReference (WR 15-314)</div><div>Change: (New) 3.4 added +pickUpDateTime (WR 18-136)</div></div></div></div></div>  |  |

## 7.6 BMS Release 3.5

No work requests. Document upgraded for release consistency.

## 7.7 BMS Release 3.5.1

No work requests. Document upgraded for release consistency.

## 8 Appendices

Not Applicable

## 9 Acknowledgements

### 9.1 Work Group

| Function | Name                        | Company / organisation                                    |
|----------|-----------------------------|---|
| Co-chair | Rossner (Pottier), Natascha | GS1 France  |
| Co-chair | Schmidt, Tom Eric           | August Storck KG  |
| Member   | Bemrose, Jonathan           | R&R Ice Cream   |
| Member   | Bodemer, Petra              | dm-drogerie markt GmbH + Co. KG                           |
| Member   | Boikanyo, Rebhone           | GS1 South Africa / Consumer Goods Council of South Africa |
| Member   | Canada, ON                  | M3B 3L1   |
| Member   | Carlson, Jim                | General Mills, Inc.                                       |
| Member   | Chresta, Richard            | GS1 Switzerland   |
| Member   | Cook, Don                   | Wal-Mart Stores, Inc.                                     |
| Member   | Cox, Marc                   | Philips Electronics N.V.                                  |
| Member   | Darnell, David              | Systrends   |
| Member   | De Flou, Nele               | GS1 Belgium & Luxembourg                                  |
| Member   | Dicks, Arne                 | GS1 Germany   |
| Member   | Duvinger, Karina            | GS1 Sweden  |
| Member   | Foerderer, Klaus            | GS1 Germany   |
| Member   | Gathmann, Stefan            | GS1 Ireland   |
| Member   | Grangard, Anders            | GS1 Global Office   |
| Member   | Harpell, Eileen             | GS1 Community Room Staff                                  |
| Member   | Hand, Phil                  | JDA Software  |
| Member   | Herregodts, Kurt            | GS1 Belgium & Luxembourg                                  |
| Member   | Kempkes, Fred               | Unilever N.V.   |
| Member   | Kernan, Brendan             | GS1 Ireland   |
| Member   | Kidd, Robin                 | Nestle  |
| Member   | Krid, Anne-Claire           | GS1 France  |
| Member   | Lanoue, Tom                 | General Mills, Inc.                                       |
| Member   | Laur, Rita                  | GS1 Canada  |
| Member   | Lenman, Mia                 | GS1 Sweden  |
| Member   | Lerch, Hanjoerg             | METRO Group   |
| Member   | Moberg, Dale                | Axway   |
| Member   | Montes de Oca, Alejandra    | GS1 Mexico  |
| Member   | Ng, Ella                    | GS1 Australia   |
| Member   | Peelen, Esther              | GS1 Netherlands   |
| Member   | Pelekies, Andreas           | GS1 Germany   |

| Function | Name                 | Company / organisation            |
|----------|----------------------|-----------------------------------|
| Member   | Perrier, Patricia    | GS1 France                        |
| Member   | Przybilla, Christian | GS1 Germany                       |
| Member   | Pujol, Xavier        | GS1 Spain                         |
| Member   | Racek, Greg          | Wal-Mart Stores, Inc.             |
| Member   | Repetto, Mirko       | GS1 Italy                         |
| Member   | Robba, Steven        | 1WorldSync Holdings, Inc.         |
| Member   | Rosell, Pere         | GS1 Spain                         |
| Member   | Rosenberg, Steven    | GS1 US                            |
| Member   | Schmid, Sue          | GS1 Australia                     |
| Member   | Schneider, Christian | GS1 Switzerland                   |
| Member   | Sehorz, Eugen        | GS1 Austria                       |
| Member   | Sharma, Vishal       | General Mills, Inc.               |
| Member   | Shimazaki, Ayako     | GS1 Japan                         |
| Member   | Sion, Emilie         | GS1 France                        |
| Member   | Souza, Nadia         | GS1 Brasil                        |
| Member   | Strand, Roman        | GS1 Germany                       |
| Member   | Tan, Milton          | GS1 Malaysia                      |
| Member   | Tompsett, Simon      | Waitrose                          |
| Member   | Trelle, Ute          | 1WorldSync Holdings, Inc.         |
| Member   | Tse, Steve           | GS1 Hong Kong                     |
| Member   | Tyson, Betty         | Knouse Foods Cooperative, Inc     |
| Member   | Van den Bergh, Senne | GS1 Belgium & Luxembourg          |
| Member   | Van der Eijk, Pim    | OASIS - Sonnenglanz Consulting BV |
| Member   | Veldhuis, Saskia     | Procter & Gamble Co.              |
| Member   | Welch, Shan          | GS1 UK                            |
| Member   | Westerkamp, Jan      | GS1 Netherlands                   |
| Member   | Wilson, Mary         | GS1 US                            |
| Member   | Windsperger, Bekki   | Best Buy Co., Inc.                |
| Member   | Yang, Shaopeng       | GS1 China                         |
| Member   | Yusdiar, Dani        | GS1 Indonesia                     |
| Member   | Zwanziger, Greg      | SUPERVALU                         |

## 9.2 Development Team Members

| Function                   | Name            | Organisation      |
|----------------------------|-----------------|-------------------|
| GSMP Process Lead          | David Buckley   | GS1 Global Office |
| Technical Development Lead | Miklos Bolyky   | GS1 Global Office |
| Peer Review                | Mark Van Eeghem | GS1 Global Office |